



Political, juridical and technical framework for waste management in Russia

Maria Liubarskaia



Cities in Russia is suffering from many urban environmental problems, such as air pollution, water pollution, land degradation, inadequate solid waste management system.

Among them, problems in the sphere of solid waste has become a priority issue due to its fast enhancement trend and it impacts upon air, water, land and human health.



- Specificity of solid waste management in big cities, such as Saint-Petersburg, is based on such issues:
- 1) long distances between places of waste generation and objects of their recycling or landfilling;
 - 2) big variety of groups of participants of solid waste management process;
 - 3) compound structure of a household waste (big share of packing, etc.)



Legislation of national level

The federal act “On Waste of Production and Consumption” (1998, modified in 2000-2016):
Stipulates main principles of state policy in the field of the solid waste management.
Waste products are considered as object of the property.
Defines powers of subjects of the Russian Federation in the field of the solid waste management.
Determines the state accounting and the reporting



Legislation of national level

Changes to the federal act “On Waste of Production and Consumption” made by Federal Law of December N 458-FZ. Changes come into effect January, 1, 2016

Article 16. The fee for a negative impact on the environment during disposal of waste

Article 24.1. Utilization fee

Article 24.2. Regulation in the field of waste management (management of end-of-life goods)

Article 24.5. Environmental fee

Article 24.6. Regional operator for the management of municipal solid waste



In the most of household waste collection points there is no separation of waste flows.





NGO «Separate Collection » («Раздельный сбор»)

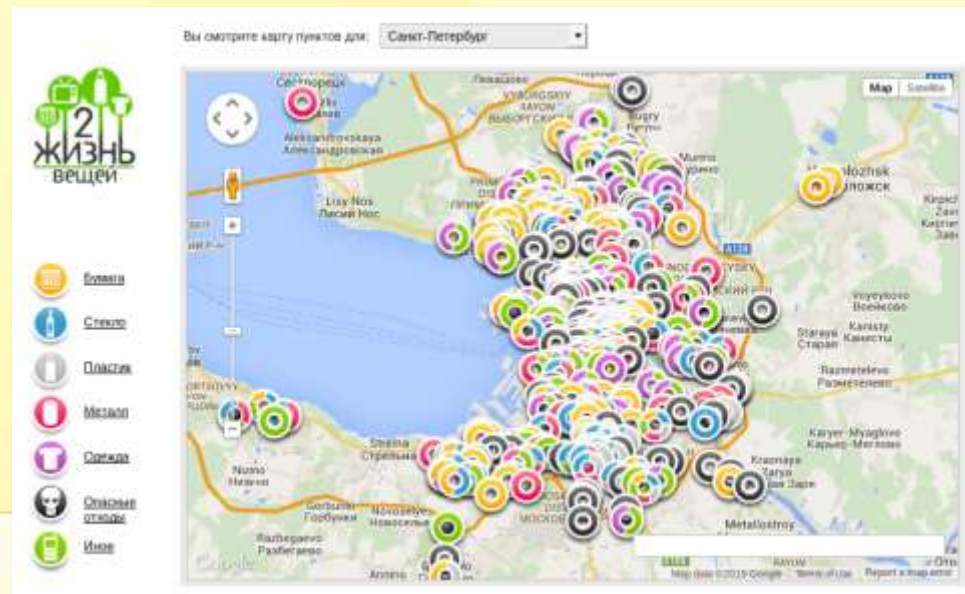




Collection of some fractions of household waste

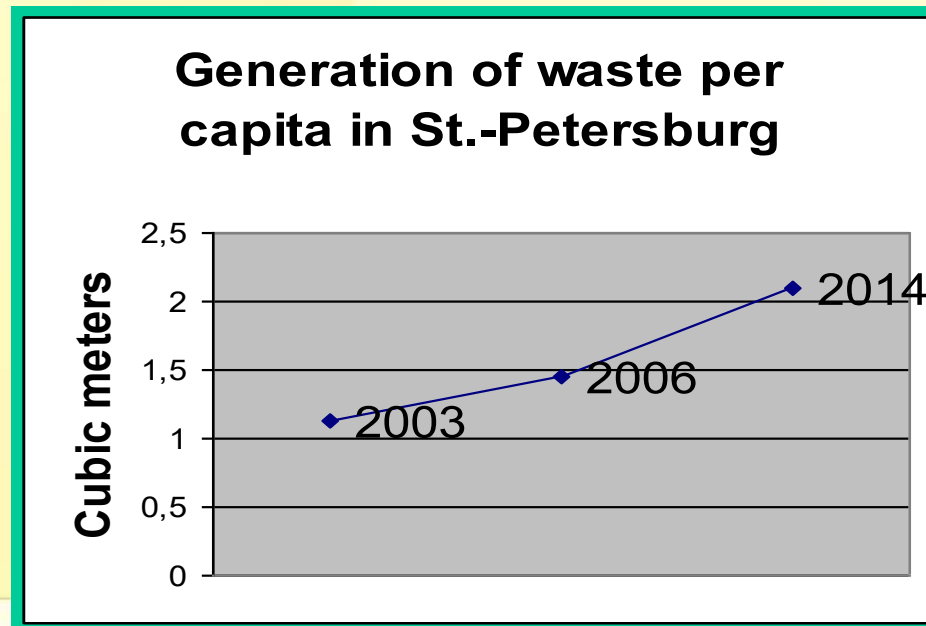
Map of collection points

<http://recyclemap.ru/spb>





Real generation of household waste per capita is constantly increasing





There are two plants in St Petersburg which process waste into compost





Thank you for your attention!

Contacts: lioubarskaya@mail.ru